

Clinical Ethics Program at Yale University



The *Interdisciplinary Center for Bioethics at Yale University* and
The *Program for Biomedical Ethics at Yale School of Medicine* invite you to:



Clinical Ethics Skills and Methods: Guideposts to Navigate Uncertainties at the Bedside Friday, January 25, 2019 at Yale School of Medicine, New Haven, CT

\$0 for members of YNHH ethics committees (Greenwich, Bridgeport, YNHH, Westerly, and Lawrence & Memorial) and community members of any hospital ethics committee; \$175 others; Advance registration required. Visit <https://bioethics.yale.edu/clinicaethics>



**Featured Guest Lecturer:
Nancy Berlinger, MDiv, PhD**

Research Scholar, The Hastings Center; Co-Director, Aging, Chronic Illness, and the End of Life, Wilson Trust



**Featured Guest Lecturer:
Joseph J. Fins, MD, MACP, FRCP**

E. William Davis, Jr., M.D. Professor of Medical Ethics and Chief, Division of Medical Ethics, Weill Cornell Medical College, & Solomon Center Distinguished Scholar in Medicine, Bioethics and the Law, Yale Law School



William Logue, JD

Founder, The Logue Group;
Director of Dispute
Resolution Training, Quinnipiac
University School of Law



Katherine Kraschel, JD

Lecturer in Law, Clinical Lecturer in
Law, Research Scholar in Law, and
Executive Director of the Solomon
Center, Yale Law School



Mark Mercurio, MD, MA

Professor of Pediatrics (Neonatology);
Chief, Neonatal-Perinatal Medicine;
Director, Program for Biomedical Ethics,
Director, Yale Pediatrics Ethics Program,
Yale School of Medicine



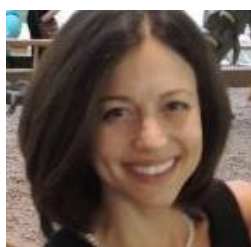
Laurie Cardona-Wolenski, PsyD

Assistant Professor; Chief of Psychology, Yale
Child Study Center Psychology Training
Program; Co-Director, Yale Child Study Center
Pediatric Consultation-Liaison Service



David Hersh, MD, PhD

Assistant Professor of Pediatrics
(Hospital Medicine); Chair, Yale-
New Haven Children's Hospital
Pediatric Ethics Committee



Lori Bruce, MA

Director, Summer Institute in Bioethics;
Assoc. Director, Interdisciplinary Center for
Bioethics, Yale University; Chair, Community
Bioethics Forum, Yale School of Medicine



Stephen Latham, JD, PhD

Director, Interdisciplinary Center for
Bioethics; Senior Research Scientist, Political
Science; Adjunct Professor in Management;
Lecturer in Law, Yale University



Thomas Duffy, MD

Professor Emeritus of Medicine
(Hematology), Yale School of
Medicine

Accreditation: This Activity has been planned and implemented in accordance with the Essential Areas and Policies of the Accreditation Council for Continuing Medical Education (ACCME) through the joint sponsorship of The John D. Thompson Hospice Institute for Education, Training, and Research, Inc., The Interdisciplinary Center for Bioethics at Yale University & The Program for Biomedical Ethics at Yale School of Medicine. The John D. Thompson Hospice Institute for Education, Training and Research, Inc. is accredited by the Accreditation Council for Continuing Medical Education (ACCME) to provide continuing medical education for physicians. The John D. Thompson Hospice Institute for Education, Training and Research, Inc. has designated this educational activity for a maximum of 7.25 AMA PRA Category 1 Credits (CMEs). No partial credit awarded - Must attend entire program for credit. **Disclosure:** The speakers and members of the Planning Committee do not have any commercial or financial interest which would bias the presentation.

Yale's Interdisciplinary Center for Bioethics also offers innovative, engaging 4-day and 7-week summer programs.

Visit <https://bioethics.yale.edu/programs> or contact us: bioethics@Yale.edu